



Liffey

PARTNERSHIP

BUILDING INCLUSIVE COMMUNITIES



A community-led
local development
organisation



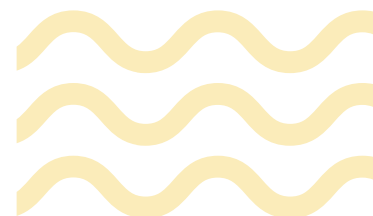
2024 ANNUAL REPORT

Contents

| | |
|---|----|
| About Liffey Partnership..... | 3 |
| Vision | 3 |
| Mission | 3 |
| Company Information | 3 |
| Chairperson’s Welcome..... | 4 |
| Introduction from CEO..... | 6 |
| Introducing Liffey Partnership | 8 |
| 2024 The Year in Numbers..... | 9 |
| Working Together for Client Outcomes..... | 10 |
| Dave’s Story | 10 |
| Rose’s Story..... | 11 |
| NeuroVibe Tribe Story | 11 |
| Children and Families..... | 12 |
| Parent’s Story..... | 13 |
| Community Development | 14 |
| Education & Employment | 16 |
| Self-Employment..... | 19 |
| Health & Inclusion | 20 |
| Hear from our Clients..... | 21 |
| Contact Us | 23 |
| Our Services | 24 |
| Financial Summary | 26 |
| Our Values | 27 |



About Liffey Partnership



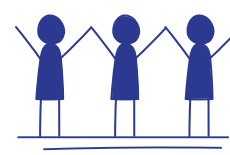
VISION

Liffey Partnership envisions a future for our communities where poverty is significantly reduced and where people who experience marginalisation and disadvantage are fully supported to realise and fulfil their potential in a way that values inclusion, diversity, and equality for all.



MISSION

Liffey Partnership offers services, support and advocacy working with adults, children, and communities. Using an integrated and collaborative approach, we work to improve economic, social, and environmental outcomes and life opportunities.



Company Information

Chairperson's: Jennifer Courtney **Company Secretary:** Teresa Dunphy

Directors: Jennifer Courtney, Terry Hobdell, Patricia Cassells, Hazel Norton, Cecilia Munroe (resigned November 2024), Daithí Doolan, Sophie Nicoulaud, (resigned July 2024), Warren Dempsey, Peter Kavanagh, Dave O'Donovan, Brendan Kenny (resigned January 2024), Gwen Redmond (appointed November 2024), Martin Gore (appointed November 2024), Eleanor Burke (October 2024)

Company Number: 252413 **Charity Number:** CHY11947

Registered Office: 4 Drumfinn Park, Ballyfermot, Dublin 10, D10AY66

Auditors: KSi Faulkner Orr, 10 Mount Street Lower, Dublin, D02 HT71



Chairperson's Welcome



As Chairperson of The Ballyfermot Chapelizod Partnership CLG, I am delighted to present to you the 2024 annual report. We commenced the year as Ballyfermot Chapelizod Partnership and following an extensive consultative process with all our stakeholders decided to become Liffey Area Partnership in April 2024. Our new name reflects the increased geographical area in which we operate while continuing to support the communities of Ballyfermot, Cherry Orchard and Chapelizod.

“Liffey Partnership” as a brand symbolises unity and collaboration. Just as the River Liffey weaves its way through the heart of Dublin, our organisation flows through the lives of the communities we serve, connecting people with opportunities and with each other.

Our story is one of connection and empowerment. Liffey Partnership is dedicated to bridging gaps, building bridges, and fostering unity, working towards a shared future built on the principle of equity. We understand the vital role that connections play in sustainable and inclusive communities. The river Liffey connects us to all the communities of place and interest in which we operate from Dublin 10, Dublin 20, Dublin 1 and Dublin 8.

As a community-led local development company, our mission in Liffey Partnership is to be the link that brings people together to work for a fair and just society for all. Through our work, we strengthen bonds between individuals and neighbourhoods, providing the path for diverse voices to be heard, respected, and celebrated.

In 2024, along with our name change, we also developed a new strategic plan for the period 2024 – 2028 based on community feedback. Our new strategic plan reaffirms our commitment to our values of Community Development, Empowerment, Integrated and Person-centred, Accountability, Inclusion and Participation and Equality and Equity. Our Mission and Values are central to what we do and are set out in our new strategic plan 2024-2028. The goals and objectives of our strategic plan reflect an ambitious vision for the communities and people we work with and are informed by a diverse range of voices heard through the comprehensive community consultation process.

The strategic planning process offered a valuable opportunity to revisit and recommit to the organisation's core values of community development; empowerment; integrated and person-centred development; inclusion and participation; equality, equity and accountability. These values underpin and direct each decision we make as an organisation and guide us in our work in building inclusive communities.

As our communities are diverse so are our services. We are an organisation that places people and community groups at the heart of what we do. Our programme areas include:

A series of services and initiatives that engage people at every stage of life from early years to older persons and respond to a range of needs including parenting, family support, social inclusion, education, health, wellbeing, employment, self-employment and more. As well as working with individuals and families, Liffey Partnership also provide support to and collaborate with a wide range of community groups and social enterprises locally who contribute greatly to the richness of life in our communities. The programmes, as resourced by funder partners, are operationalised by a strong staff team ably led by our CEO, Anne Fitzgerald.

Throughout this annual report you may reflect on the breath and scale of the work undertaken in 2024. The work is possible due to the commitment and resourcing of the following: the Department of Rural and Community Development, Dublin City Council, the Department of Social Protection, the Health Services Executive, Tusla and the Ballyfermot Alcohol and Drugs Task Force. We are immeasurably grateful to our funders and work to meet all their requirements while keeping our individuals and communities at the centre of what we do.

As a charity, we rely on our voluntary Board of Directors, of whom I'm proud to be a member, who give so willingly of their time and expertise to Liffey Partnership so that the Partnership meets all its aspirations and legal requirements. With the willingness of people to serve on a voluntary Board, all this work is possible and, for that, my thanks to my fellow Directors.

Jennifer Courtney

Chairperson

Introduction from CEO



As CEO, I am proud to present to you our 2024 Annual report. Through photos, narratives and numbers, we present some of the highlights of our work in 2024, all of which is aimed at making our communities good places to play, learn, work, grow and live.

The core purpose of Liffey Partnership is to enhance the social and economic development of the area and thereby increasing education, employment and life options for local people. In addition, Liffey Partnership is dedicated to working collaboratively with local groups and statutory agencies to address the causes and consequences of poverty and its impacts on people who live within LAP area of

operation. As Chief Executive Officer of Liffey Partnership, I am pleased to report that 2024 was a year where the services and resources of Liffey Partnership continued to have a positive impact on the local community; 2,553 individuals received social inclusion supports from Liffey Partnership. 134 people were supported to enter further and third level Education. 214 people were supported into paid employment with a further 155 into work placement opportunities. 261 families were supported as family units and 463 individuals engaged with Health and well-being supports. 42 community groups were supported both financially and by mentoring, training and other supports. In addition, in 2024 the Liffey Partnership Community Garden produced and sold 2092KG of sustainable food produce.

Our new brand of Liffey Partnership along with our new strategic plan 2024 - 2028 assist and support us as an organisation to be best placed to respond to the social inclusion needs of the community, working towards building a vibrant, client-centred and community-led organisation.

Liffey Partnership operates 5 core areas of programme activity - the Social Inclusion Community Activation Programme (SICAP), Employment Services, Family Matters Programme, the Empowering Communities Programme and an ever-expanding range of health and well-being programmes.

In total, LAP delivers 22 projects covering: community development, lifelong learning, older persons, recovery, mental health, wellbeing, employment services, enterprise, school and family support. The community garden initiative continues deliver on Liffey Partnership climate action agenda. In 2024, Liffey Partnership was recognised by the Department of the Environment, Climate and Communications as a Sustainable Development Goal Champion. The range of programmes delivered by Liffey Partnership reflects the identified needs of the community with a core aim of (through an integrated services delivery model) addressing both the causes and impacts of poverty.

In looking to the future, Liffey Partnership will continue to offer services, support and advocacy by working with and alongside adults, children and communities to build strong resourceful communities. In our commitment to integrated working, we work to improve economic, social environmental and life opportunities for all.

The success of Liffey Partnership involves the dedication, skills and commitment of many and to that end, I wish to thank the Chairperson of LAP Jenny Courtney for her work, commitment and the inspiration she provides as Chair, the members of the Liffey Partnership Board of Management, the Liffey Partnership management team, and the staff of Liffey Partnership who day in and day out approach their work with expertise, commitment, empathy and enthusiasm.

In carrying out its work, Liffey Partnership is grateful to the following funders; Department of Rural and Community Development, Dublin City Council, Tusla, the Heath Services Executive, the Department of Social Protection and the Ballyfermot Drug and Alcohol Task Force.

To conclude, I wish to thank the individuals and groups who continue to place their trust, stories and aspirations in our hands, we continue to learn from them how to do better. We continue to welcome your reflections and suggestions and feedback on all aspects of our organisation, services and work.

Anne Fitzgerald

Chief Executive Officer



Introducing Liffey Partnership

The name 'Ballyfermot Chapelizod Partnership' has been a cornerstone of the company's identity for many years. It accurately described who we are and where we're based. As the partnership has continued to grow, delivering more services to more areas, in 2024 the time was right for a new name – one that reflects the partnership's wider footprint but still retains its collective approach.

About our new brand

In the heart of our vibrant communities, Liffey Partnership symbolises unity and collaboration. Just as the River Liffey weaves its way through the heart of Dublin, our organisation flows through the lives of the communities we serve, connecting people with opportunities and with each other.

Our new name and logo was carefully considered with feedback from clients, community, staff management and directors. The new brand was accompanied by a brand new website with an emphasis on accessibility for those with language or literacy issues including more images, videos and options for translation. Find out more by visiting liffeypartnership.ie

On 29th April 2024, Lord Mayor of Dublin, Cllr Daithí de Róiste, formally launched the new name as well as the strategic plan to guide the Partnership's work until the end of 2028.

What does this mean for Ballyfermot, Cherry Orchard and Chapelizod?

We understand that some people may have concerns about what our name change means for our home communities. However, our services in Ballyfermot, Cherry Orchard and Chapelizod will not be moving. We remain fully dedicated to supporting employment, enterprise, health and well-being, community development, and family matters in Ballyfermot, Cherry Orchard and Chapelizod.



2024 The Year in Numbers

2,555

Clients Supported



51

People supported into part-time employment



163

People supported into full-time employment



291

Speech & Language Appointments Attended



76

Clients engaged in counselling and

85

participated in group based mental health programmes



2,092

KG of food sustainably produced by Cherry Orchard Community Garden



134

Clients Supported to Access Further and Higher Education



261

Families engaged in parenting & family support programmes



463

People received Health & Wellbeing Supports through Sláintecare Healthy Communities



155

Tús work placements supported



Support provided to

42

Community Groups



1,224

New Clients Registered



14

New Businesses were established with support from LAP



Working Together for Client Outcomes

Liffey Partnership is committed to working together across our programmes and services to get the best possible outcomes for our clients. Liffey Partnership staff work in a holistic way to provide quality support to people in education, employment, health, parenting and family support and ensuring people are connected to their communities.

Below are some stories of how our different services and programmes worked in an integrated way throughout 2024. Some details have been changed to protect the privacy of our clients.

Dave's Story

“‘Dave’ was a ‘walk-in’ client who wanted help creating a CV and applying for a position with the Gardai. One of our Employment Guidance team provided some initial support, which also included providing a loan for a laptop. Although his application to the Gardai was unsuccessful, Dave was placed into a part time cleaning role while he sought other opportunities.

Dave was so pleased with the service he’d received, he brought in a friend who needed help with his CV and job search, who was also placed in employment. Dave then referred another friend and a family member who required support applying for a PPS and employment support.

Dave then referred his sister who took part in our driver theory programme, whilst Dave’s friends were referred to a Safe Pass and Manual Handling course. Since then, Dave has brought in yet another one of his friends who also required support with his CV and job searching. All five of the clients, along with Dave, continue to drop in to receive various types of support across the teams of Liffey Partnership ”

1



Walk in Client seeking help with CV and application to Gardai. IT access for video interview (IT loan provided)

2



Application to Gardai was unsuccessful. Client placed part-time in cleaning role and pursuing a role in Dublin Airport

3



Dave then brought in his friend who needed help with CV and job search - also placed in employment

4



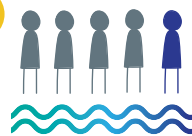
Dave referred two more of his friends and family whom received assistance to apply for a PPS and employment support from EGO

5



Dave then referred his sister who took part in LP Driver Theory Programme, others referred to SafePass & MH

6



All 5 clients still engaged with LP, receiving ongoing employability supports

Rose's Story

“Rose is a client who was referred to Liffey Partnership’s Local Area Employment Service by the Department of Social Protection. Having met with an Employment Guidance Officer, she was referred to the Liffey Partnership Tús programme where she hoped to gain work experience and improve her spoken and written English. Rose commenced a work placement learning valuable skills and connecting with her new community.

Unfortunately, during Rose’s employment her life was altered irrevocably, and she could no longer participate in her placement. As a client of our integrated services, Rose’s young adult son and daughter were able to avail of a wide range of supports and services to navigate this time of crisis and upheaval. Liffey Partnership were able to support Rose and her family with financial, educational and personal supports by working together across our programmes to ensure the best possible outcome for Rose and her family”

1



Rose’s initial engagement with Employment Guidance identified suitability for Tús Programme

2



Rose commenced on Tús Placement in a local community organisation and was an excellent employee, learning new skills and connecting with her community

3



Suffered a life altering medical emergency during her placement

4



Rose’s son and daughter were in need of significant support. Registered with Liffey Partnership who engaged with agencies (DSP, CIC, MABS)

5



Referred for funding support to continue education via Leaders in Learning (LP Education Officer)

6



Fees paid promptly by LP Finance Department, referral to LP Counselling Service for ongoing support

NeuroVibe Tribe Story

“The value of the Liffey Partnership integrated approach is demonstrated in the story of NeuroVibe Tribe, a new community group established in 2024. The group emerged from a Parents Plus programme which was delivered collaboratively by Liffey Partnership and Tusla with funding from the Slaintecare Healthy Communities initiative. From this, a committee of local parents was established with the aim of advocating for the inclusion of neurodiverse children in the Ballyfermot Area. The emergent group were referred to the Community Development Team for support in committee skills, developing a terms of reference, developing a work plan and support with securing funding and insurance. In parallel, the Liffey Partnership ABC programme (Family Matters) continued to provide support to these families through the parent child plus and PEEP programmes. NeuroVibe Tribe were supported with equipment to set up a sensory parent and toddler group and funding for a silent disco as part of the local Halloween festival. The 2024 Christmas Fair in the Civic Centre included a ‘Sensory Santa’ with the support and guidance of NeuroVibe Tribe which enabled some neurodiverse children to visit Santa for the first time”

1



Tusla & Liffey Partnership collaborated on a Parenting Programme for parents of children with additional needs

2



From this a committee of parents was established to advocate for the needs of neurodiverse children in Ballyfermot

3



The group were referred to LP Community Development Team for committee skills, ToR development, Training, Insurance etc.

4



Family Matters supported parents children and families individually through PC+ and PEEP Programmes

5



The group were supported with funding and equipment for a sensory parent and toddler group

6



NeuroVibe Tribe launched the D10 Autism Friendly Town Initiative. The Xmas Fair in the Civic Centre featured a Sensory Santa with some children visiting Santa for the first time

Children and Families

Hearing the Voice of Parents of 0-6 year olds in Ballyfermot



Throughout the year, the Family Matters ABC team have been busy supporting parents through groups like Baby Massage, PEEP- learning through play together and Incredible Years Baby. There have been many workshops, trainings and courses for parents and workers alike. Families took part in the Parent Child Plus Home Visiting programme which supports parents with their child's early play, reading and speech and language. All this work was made possible with the collaboration of many staff from a wide variety of organisations right across the community.

In 2024, LAP undertook a new project to hear the views of parents of young children in the area- especially around what works well, what they would like to see more of and if there was anything that could be improved or changed for them as parents. This was funded through the Tusla Parenting Participation Fund.



The first phase of this project involved an online parents' survey which received over 170 responses. The researcher also held 5 parents focus groups within the community, where young children could also attend. Parents spoke openly about their parenting journey over these first years with their child, their struggles, their joys and what they would love to see for their children and families in the local community.



With all this invaluable information from parents, the researcher Liz Harper and the Family Matters Team compiled the 'Hearing the Voice of parents in Ballyfermot of 0-6-year-olds report'. This report summarises the findings of the parent survey and discussion groups and makes recommendations, which Liffey Partnership will be mindful of when planning and delivering community parenting supports in the future. Rebecca Moore, National Lead, Parenting Support, Tusla Prevention Partnership and Family Support launched the report on December 10th at a gathering in the Ballyfermot Civic Centre. Local parents spoke passionately and memorably at this event. The full report is available on our website or in the Liffey Partnership office Drumfinn.



Parent's Story

Hear from local parent Caroline about her experience with Liffey Partnership

“I joined the Parent Child Plus Home Visiting Programme through a local parent-toddler group that I attended weekly. It was one of the best things I had done for myself and my family. My daughter was on the programme but her younger brother benefited a lot from it too. They loved the visits from our home visitor Gráinne, so much so, that they used to wait at the window looking for her car to arrive. My daughters speech and social skills had grown so much within the 2 years of the visits. It really helped prepare her for school.

Gráinne gave us so much support as a family, tips with taking the time to sit on the floor with the child, doing creative play, letting the child lead through play and bringing out their imagination. As well as helping my children it has really helped me in my personal life too. Like all mothers of young children I had my struggles so I would be looking forward to our visits just as much as the kids. Being at home with the children all day has its advantages but there are a lot mothers go through, they can lose themselves and get bored at home.

Since starting the programme in 2022 I have completed a Level 5 SNA course, which was brought to my attention by Gráinne so thanks to her I am now a certified SNA. I signed up to do many courses in Liffey Partnership. Courses such as 'Circle of Security' which helps with parenting and the struggles that each parent may face and how to handle situations differently that would benefit both parent and child.

I also completed the 'Pre-employment Home Visitor' course, which was the first of its kind and I feel honoured to be part of such an amazing course. It showed me how to empathise with others, build trust and to show creativity which would be the most important factors in the role of being a home visitor. This course was the



best course I have ever done and I found really beneficial for my personal development.

In both courses from Liffey Partnership I met amazing people that I still keep in touch with. I had brilliant facilitators that I could not fault. I've also learned so much from those courses and they have really helped me grow as a person and i am extremely grateful for that. I have also interviewed for a home visiting position and I have been put on a panel for future employment.

I would encourage anyone from the area to attend Liffey Partnership it is a place that has helped me in so many ways. It is a great place with friendly, influential, helpful people”





Community Development

Community Grants 2024

Community groups were invited to apply for grants to help with community projects in the local area. There were 4 different strands of funding:

- **Ballyfermot Local Drug & Alcohol Task Force Community Grants**
- **Cherry Orchard Specific Community Activities Grant**
- **Cherry Orchard Summer Holidays 2024 - Integrated Youth Services Plan 2024**
- **Social Inclusion Community Activation Programme (SICAP) Grant**

Information sessions were held for interested community groups to ask any questions or get assistance with the forms. The Community Development Team also provided one-to-one assistance with groups who required individual support. There were a total of 42 applications from community organisations. 24 groups/organisations and one consortium were successful in their applications and ran events in the local area.

The community development team has also started disseminating Dublin City Council's funding digest and other relevant funding opportunities to community groups in a monthly email newsletter to highlight the opportunities available.



Your Vote Your Voice

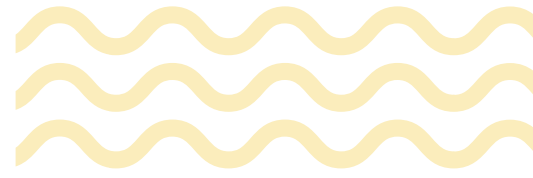
The "Your Vote Your Voice" campaign was led by the community development team to encourage people to engage in democratic processes through voting.

As part of the campaign, the team led two workshops in Cherry Orchard on the importance of voting and how to do it. The team also created a series of social media posts about the electoral process which were shared on Liffey Partnership's Instagram, Facebook, and the COIB Instagram.

The posts were shared in relation to the Family Care Referendum in March 2024, the Local and European elections in May 2024, and the general election in November 2024.

The materials emphasized the importance of each individual vote and how it is considered for communities, national policies and global issues.





Community Garden

2024 was another successful year for the Cherry Orchard Community Garden. The Community Garden was chosen to be a United Nations Sustainable Development Goal Champion by the Department of Environment, Climate and Communication.

In addition, the Garden was the proud recipient of a prestigious Dublin City Social Enterprise Award recognising the contribution of all the Garden Staff and Volunteers throughout the year. The garden will use the prize towards a new refrigerated van to transport produce.



Community neighbourhood engagement

In the course of 2024, the community development team supported the establishment of 4 new community groups. The team supported new committees by providing them with skills and guidance to become participatory and of benefit to their members.

These included:

- **'Get Up and Go Social Club'**: A group of residents in local nursing home
- **Kylemore and Chapelizod Sister shed**: The second women's shed in the catchment
- **NeuroVibe Tribe**: An advocacy group to support neurodiverse members of the community.
- **Recycled Teenagers**: An older person's social group.

In Cherry Orchard, the local clean ups continued, and the team worked with the Stone Soup project who were awarded a DCC Pride of Place award.



Education & Employment

Leaders in Learning

2024 was another successful year for the Leaders in Learning initiative, with 89 applications received. Residents from Cherry Orchard furthering their education were invited to apply for funding and to become a role model for lifelong learning within the community.

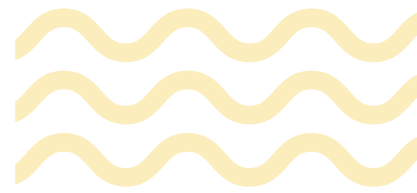
Flyers were delivered to each household in Cherry Orchard to raise awareness of the funding opportunity, along with a strong social media campaign across two different Instagram pages and local WhatsApp groups.

71 people were awarded funding to support their education across a range of ages and backgrounds, with a total of €53,000 funding awarded towards fees, travel, materials and resources.

The 2024 Leaders were celebrated with an awards ceremony in October 2024 in St Ultan's school where 5 recipients shared their personal journey, role modelling the possibilities available to everyone in the local area.

Leaders in Learning is an initiative of the Cherry Orchard Implementation Board, administered by the Liffey Partnership with funding from the Department of Rural and Community Development and Dublin City Council.





Job Fairs

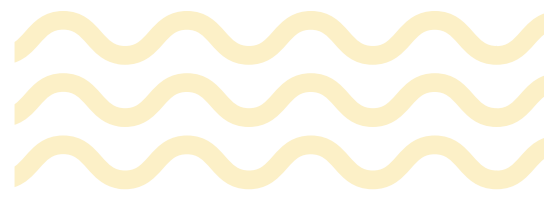
2024 saw the Liffey Partnership lead out on two highly successful job fairs in our Dublin 8 and 10 locations.

The Dublin 8 Job Fair took place on 1st July and was well attended by over 500 jobseekers a host of employers from across the south inner city and the wider Dublin region.

Later in the year, as part of the Cherry Orchard Implementation Board (COIB)'s Lifelong Learning Pillar actions, Liffey Partnerships Local Area Employment Service, Empowering Communities and SICAP teams partnered with The Cherry Orchard Equine Centre, to host a Job Fair in Cherry Orchard.

The Job Fair took place on October 8th with 28 stands, 12 of which were employers, 11 back to work supports and 5 trainers and a total of 263 people attended the Job Fair. Employers such as Primark, Higgins Joinery, The Defence Forces, Go Ahead and Irish Homecare met with lots of interested job seekers. Many job seekers made online job applications during the Job Fair and some job seekers secured interviews.





Tús

Tús is a 12-month work placement programme offering short-term working opportunities and experience for unemployed people in local non-profit, community and charity organisations. The Liffey Partnership Tús Team Leaders are very proactive in securing new host organisations to ensure there are a wide variety of placements for participants.

Some of the exciting new hosts offering placements in 2024 include: Clontarf Rugby Club, Crumlin Boxing Club, Cheeverstown Mental Health Services, MABS, Comhlámh, Liffey Wanderers FC and Third Space café. The Tús team have also established Change Clothes as a host, which is providing four Tús placements that includes full training in hand and machine sewing, garment upcycling, and clothes design.

40 Ukrainian citizens, who have temporary protection status in Ireland, have been supported into Tús placements in many diverse and exciting roles. The team has worked closely in conjunction with the Ukrainian Crisis Centre Ireland to provide important support and services for the Ukrainian community living in Ireland. These include clients working in financial administration, graphic design and language education.



Chloe's Story

“ Chloe came to Liffey Partnership as a self-referral, having researched the Tús programme herself. She expressed that, as a young person, she wanted a better life for herself, and that Tús was a good starting point. The Tús Project Officer assigned to Chloe discussed placements that would suit her, and in the end, she decided to try something in childcare – in light of her own life experiences as well as a desire to give back to the community.

An interview was arranged for Chloe with a local school, and she started her placement there in late 2023. Since starting her placement Chloe has taken every opportunity to increase her chances of pursuing a career in childcare. For instance, she

decided to extend her Tús placement by six months in order to give her more on-site experience.

When the Tús team met Chloe as part of her follow-up plan, her next steps to securing employment were discussed. At this point, Chloe investigated going back to college to study Social Care at a City of Dublin FET College. She passed the admission interview and will commence her study there in September 2025. After completing the course, she hopes to secure full time employment with her placement host.

Chloe's story demonstrates how Tús can be such a valuable experience working within our communities. ”



Self-Employment

Start your own business

2024 saw 94 people supported to develop their business ideas, 25 completed Start Your Own Business Courses and 14 successfully set up a business. Throughout the year, Liffey Partnership delivered training, mentoring and support to people living locally who have a desire to work for themselves. Our Enterprise staff also support people to access the Back to Work and Short Term Enterprise allowances available to them via the Department of Social Protection providing a level of financial support to help in developing their business idea.



Charlie's Story

“Charlie was referred to the Enterprise Officer through the Local Area Employment Service. He had 5 years' experience valeting cars before he was made redundant. Redundancy and difficult educational experiences had dented his confidence and belief but he was eager to get back to work and use his skills.

Charlie was referred to explore of self-employment when a serendipitous opportunity came up to set up a car valeting business locally.

Despite the challenges, Charlie enthusiastically attended every appointment, completed the Start Your Own Business course and worked hard and patiently on his BTWEA application. He successfully applied for the premises lease and was approved for BTWEA. Charlie has gone on to pass his 3-month review stage and is now looking to give back to the community by providing work experience to teenagers locally. ”



Health & Inclusion



Living Well

In 2024, Liffey Partnership with funding from the HSE introduced a new programme for adults with chronic health conditions – Living Well.

Living Well is a free group programme for over 18s living with long-term health conditions. Participants may also be a carer for someone with a long-term health condition. The programme helps participants to develop skills to live well, control what they can and see a brighter future.

Following two successful programmes in 2024, Liffey Partnership has now trained local people as facilitators and will continue to roll out the programme into 2025.

Healthy Hydration “Uisce Cliste” Project

17 Healthy Hydration / Healthy Eating workshops were delivered to all the football teams in Cherry Orchard FC between September and December as part of the Uisce Cliste “Clever Water” project in collaboration with DCC, RCSI, the HSE and the CDETb.

The 20 participant teams, from under 8s to under 18s equated to approximately 400 players. Liffey Partnership was responsible for the young people’s educational intervention delivered to compliment the installation of public water fountains, educational interventions with parents and a makeover of the club’s tuck shop to more nutritious snacks.

An accompanying promotional campaign, including fun and engaging wall murals and videos, was developed featuring an accomplished player and fantastic role model Jessie Stapleton.



Hear from our Clients

As part of our quality assurance framework, Liffey Partnership regularly seeks feedback from those we work with to help us to enhance our programmes and services. Here is what some of those we worked with in 2024 had to say about our services.

The service felt very professional and [my Guidance Officer] was made for this job, as i wasn't feeling enthusiastic until speaking with him. I'm definitely feeling more motivated about my future

Staff are well trained, compassionate, understanding, friendly, patient, pleasant warm welcoming and very relaxed warm safe environment and easy to be understood and so so helpful.

Staff are all very nice and compassionate I'm with Tús now in the Liffey Partnership in a work placement my Tús team leader couldn't be nicer to me and always there if I need her in relation to the job or personal situations.

I met with [Employment Guidance Officer], she was absolutely lovely to speak with. She was very informative polite & such a pleasure to deal with. She made me feel right at home and also I needed to bring my 2 year old son with my for one of our meetings and she was so accommodating and understanding. This made things a lot easier for me. She is such a pleasure to meet with.

I am very impressed with [Liffey Partnership Staff] in starting up our community group. It has really changed my life in many many positive ways... thank you so much. As I had been very isolated for over 22 years...!!

Yes I just have to mention [Liffey Partnership Staff Member] who has been dealing with me. He is a credit to partnership. Always helpful and goes above and beyond to make you feel welcome and look out for your general wellbeing. A top, top gentleman. Also the lovely lady at reception always has a smile on her face and greets you warmly!

*I just wanted to say big thank you to [Enterprise Officer] for all the help with my Back To Work Enterprise Allowance application. He was really easy going and explained everything clearly and simply, which made the whole process so much easier for me. I am really grateful for his support - he was patient, non-judgemental and worked with me at my own pace. It took a lot of stress out of the experience.
Thank you again for all the help.*

I honestly compliment the whole team, who share common traits of helpfulness and professionalism. I've dealt with different areas of the partnership and the support was genuine and no matter the queries I made which was several someone always responded to every enquiry I made even for friends and family. Highly recommended and commend the employees at the partnership

I feel very grateful for the family services offered by Liffey Partnership. I found having my first baby more challenging than I expected. I has been lovely to have the opportunity to meet with staff and other parents and have their support and advice. I would highly recommend Liffey Partnership to others.

Contact Us



Anne Fitzgerald

CEO

01 623 5612 (Main Line)

Email: afitzgerald@liffeypartnership.ie



Mike Burger

Dublin City Community
LAES Manager

01 623 5612 (Main Line)
087 189 6457

Email: mburger@liffeypartnership.ie



Triona O'Sullivan

Health & Inclusion
Programmes Manager

01 623 5612 (Main Line)
087 217 0922

Email: tosullivan@liffeypartnership.ie



Liz O'Sullivan

Child, Family &
Community Programmes
Manager

01 623 5612 (Main Line)
087 748 7375

Email: losullivan@liffeypartnership.ie



Ciara O'Connell

Labour Market
Programmes Manager

01 623 5612 (Main Line)
087 296 2008

Email: coconnell@liffeypartnership.ie



Martin Cleary

Finance Manager

01 623 5612 (Main Line)
087 174 1120

Email: mcleary@liffeypartnership.ie



Georgina Perryman

Community Development
Projects Manager

01 6235612 (Main Line)
087 624 8025

Email: gperryman@liffeypartnership.ie



Grainne Lynch

Deputy Manager
Local Area Employment
Services

01 623 5612 (Main Line)
087 759 0997

Email: glynch@liffeypartnership.ie

Our Services

| Health Programmes | Triona O’Sullivan Health & Inclusion Programmes Manager Phone 01 623 5612 Email tosullivan@liffeypartnership.ie |
|----------------------------|---|
| Social Prescribing | Social prescribing offers GPs and other health professionals a means of referring people to a range of non-clinical community supports which can have significant benefits for their overall health and wellbeing. |
| Nutrition | Healthy Food Made Easy is a 6-week course which aims to; encourage healthy eating, improve our knowledge of nutrition when preparing our meals at home, learn healthy meals on a budget. |
| Smoking Cessation | We Can Quit is a free, friendly and supportive 8–12-week programme for people who smoke and who want support to quit smoking. |
| Heads Up | HEADSUP is an evidence based mental health education and training programme for men who are finding life stressful, have issues with unemployment, feel isolated or lonely and wish to learn ways to improve their wellbeing. This group programme aims to encourage participants to make positive changes to their lives, develop resilience and offers support to access local services and supports. |
| Treatment & Rehabilitation | The Treatment & Rehabilitation Project Officer works closely with the Ballyfermot Local Drug & Alcohol Task Force (BLDATF) and addiction projects as well non-specialised substance misuse services as relevant within the 4 Tier Model of Substance Misuse Services. |
| Community Connector | The community connector works closely with the HSEs Integrated Care of Older Persons team to connect older people living in the St James’ Hospital catchment with services and supports in their community. |
| Community Food & Nutrition | The CFN project aims to improve community health and wellbeing in the Cherry Orchard and wider Ballyfermot areas by addressing the issues of poor diet and food poverty. |
| Community Health | Health Promotion activities with a focus on the whole Ballyfermot Community and in particular members of the Traveller Community living locally with the goal of awareness raising and improving health outcomes. |
| Counselling Service | Free 8 sessions of counselling/psychotherapy with a qualified counsellor/psychotherapist. Counselling is a talking therapy that involves a trained therapist listening to you and helping you find ways to deal with emotional issues. |
| Personal Development | Group based programmes such as STEPS for Success and Try It Out where you can develop new skills, confidence, motivation and meet new people. |



| | |
|---------------------------|---|
| Child & Family | Liz O'Sullivan Child, Family & Community Programmes Manager Phone 01 623 5612 Email losullivan@liffeypartnership.ie |
| Parenting Programmes | Range of group based parenting programmes available throughout the year including Baby Massage, Parent & Baby Programme, Early Years, Child & Adolescent programmes. |
| Parent Child Plus | Parent Child + Home visiting programme: an early literacy and school readiness programme designed to support early parent/child relationship. |
| Youth Mental Health | To support the mental health and wellbeing being of children and young people in the Ballyfermot area. |
| Speech & Language | Two Senior Speech and Language Therapists (SLTs) work within the Family Matters Oral Language Programme, in early years services and primary schools intervening at universal, targeted and specialised levels with a focus on prevention and early intervention. |
| Childcare Fund | Providing funding for parents affected by drug and alcohol use to support childcare placements in local early years services. |
| Individual Family Support | Individual Family Support is provided in an integrated way within all the strands of the Family Matters programme, by our partners BTAP and Familibase, enabling parents and children to reach their potential socially, emotionally and educationally. |
| Education supports | In collaboration with schools and early years services, children, young people and their parents are supported to reach their potential in having high realistic expectations, and increased skills and knowledge around their future education and training. |

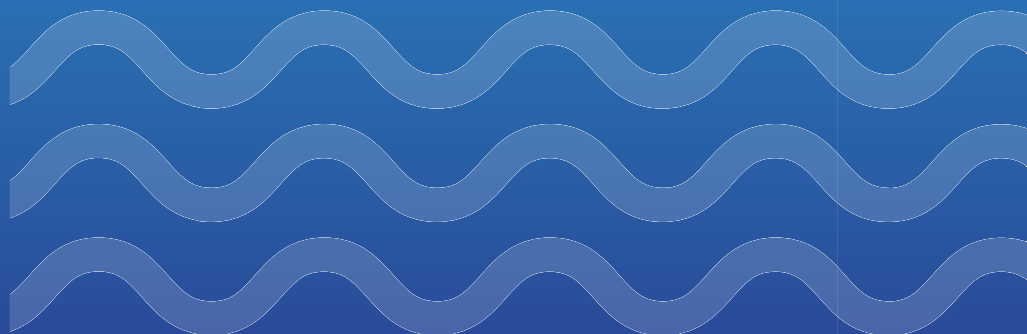
| | |
|--------------------------------|--|
| Employment Services | Mike Burger Dublin City Community LAES Manager Phone 01 623 5612 Email mburger@liffeypartnership.ie or glynch@liffeypartnership.ie |
| Local Area Employment Services | One to one career guidance and group-based employability supports for those in receipt of social welfare payments and others who are looking for work. Drop in career guidance available daily in Drumfinn Office. |
| Tús | Tús provides opportunities for people who are unemployed to break the cycle of long-term unemployment, helping to improve a person's work readiness and support them in returning to the labour market through a 12-month work placement with local community organisations. |
| Pre-Employment Programmes | Group-based and individual support to move clients closer to work with a focus on CV preparation, interview skills, motivation and goal setting, career paths, IT programmes and practical training such as manual handling, driver theory and Safepass. |
| Self-Employment Support | One to one support combined with training and mentoring to support people to set up their own businesses. Also supporting new businesses in the first two years of trading. |
| Ability Project | Employability Programme is aimed primarily at young adults 18 to 29 years old based in Dublin 2, 4, 6, 8, 10, 12 and 20 communities who experience emotional, psychological and mental health challenges (EPMH) and/or co-occurring disabilities. Programme includes 1:1 support, group programmes and work experience components. |
| Careers Edge | The aim of the Careers EDGE programme is to support the employability and progression of people with a history of substance misuse. This group-based training programme runs 2-3 times annually for 12 weeks and covers personal & professional communication, employability modules and work experience placement. |

| | |
|---------------------------------|---|
| Community Development | Georgina Perryman Community Development Projects Manager Phone 01 623 5612 Email gperryman@liffeypartnership.ie |
| Community Development | Support for local people and community groups to come together and take collective action to address community challenges, promote social inclusion and enhance life for all residents of the area. |
| Cherry Orchard Community Garden | The Cherry Orchard Community Garden provides an area of horticultural development and recreation for residents in the area of Cherry Orchard and is an inclusive space in a social and therapeutic setting. |
| Empowering Communities | The Empowering Communities Project works in Cherry Orchard to empower local communities to craft their own response to area based poverty, social exclusion and the resulting consequences. |



Financial Summary 2024

| | 2024 | 2023 |
|---------------------------------------|------------------|------------------|
| Income | | |
| Grants from government and co-funders | 6,477,696 | 6,397,612 |
| Expenditure | | |
| Charitable Activities | 6,077,053 | 5,817,433 |
| Net Income | 400,643 | 580,179 |
| <hr/> | | |
| Fixed Assets | 13,848 | 17,721 |
| Current Assets | 4,631,648 | 3,594,446 |
| Total Assets | 4,645,496 | 3,612,167 |
| Total Liabilities | 3,200,416 | 2,567,730 |
| Net Assets | 1,445,080 | 1,044,437 |



Liffey



PARTNERSHIP

Community Development



We believe... Community Development is supporting communities of either place or interest to identify and take collective action on issues that are important to them. Equality, social justice, human rights, inclusion, and sustainable development lie at its heart.

Integrated & Person-centred Development



We believe... Our services and supports are holistic, wrap-around and coordinated. We continually adapt them to pivot around the person.

Equality & Equity



We believe... Everyone has an equal right to support and life opportunities to reach their full potential. To access equal opportunities, many may need extra support due to their circumstances and where they are starting from. Our work with people and communities is about both advocating for equality and supporting equity.

OUR VALUES

Empowerment



We believe... Individuals and communities are empowered when they feel valued, supported, and have a sense of control and ownership to make decisions. Liffey Partnership sees learning as core to empowerment. When working with people and communities, Liffey Partnership will focus on what matters to them.

Inclusion & Participation



We believe... Inclusion values diversity and we believe that everyone has something unique to offer. Liffey Partnership strives in its work to create spaces and places where people and communities feel accepted and included for who they are.

Accountability



We believe... Accountability is taking ownership of both failure and success. Organisationally, we are all accountable to each other, our stakeholders, and the communities we serve.

Liffey



PARTNERSHIP

2024 ANNUAL REPORT



Rialtas na hÉireann
Government of Ireland



EUROPEAN UNION
Investing in your future
European Social Fund



Sláintecare.
Healthy
Communities

TÚSLA

An Ghníomhaireacht um
Leanaí agus an Teaghlach
Child and Family Agency



An Roinn Coimirce Sóisialaí
Department of Social Protection



Comhairle Cathrach
Bhaile Átha Cliath
Dublin City Council



Partner

Seirbhísí Fostaíochta
Employment Services